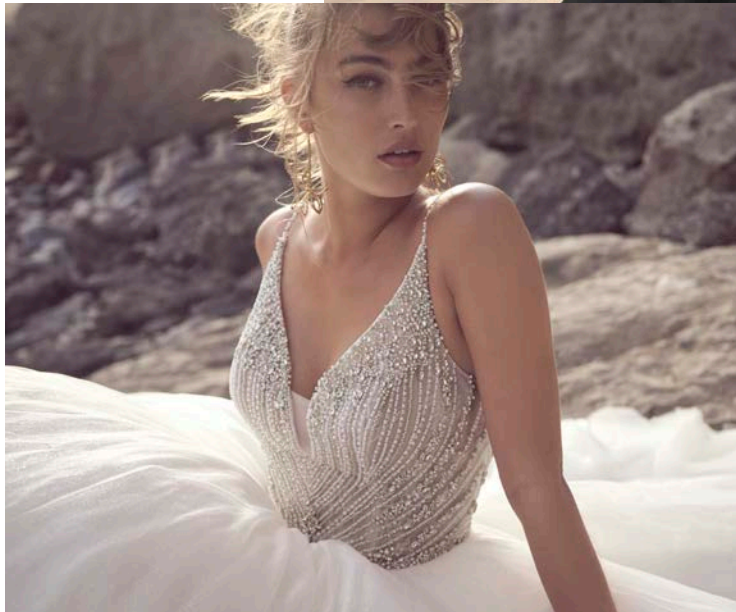




SOTTERO AND MIDGLEY

the celestial collection

SPRING 2023



CELESTIAL / MOONLIT SKIES / SOPHISTICATED DRAMA / LOVE ETCHED IN THE STARS | *celebrating twenty-five years*

Aspen 23SZ044A01

SOTTERO AND MIDGLEY®

personalize it!
FOR YOUR LOVE STORY





23SZ044A01, IV



23SZ044A01, IV
Size: 6



Dress: 23SZ044A01, IV
Cape (Clark): CAB23SC103000, SLV



Dress: 23SZ044A01, IV
Cape (Clark): CAA23SC103000, IV



Dress: 23SZ044A01, IV
Cape (Clark): CAB23SC103000, SLV

Aspen 23SZ044A01

COLORS

- All Ivory (pictured)
- Ice Pink
- All Black (pictured)

HIGHLIGHTS

- Poltava stretch Mikado
- Asymmetrical draping on bodice
- Strapless scoop neckline
- Lined with Sambir charmeuse
- Zipper with inner elastic closure and covered buttons trailing to the hem
- Pockets
- Side slit
- Ice Pink colorway is non-stretch Elin Mikado

SIZES: 0-28

ACCESSORIES

- Cape embellished with rhinestones and beading sold separately (Clark, CAA23SC103000 in All Ivory and CAB23SC103000 in Silver)

PERSONALIZATION OPTIONS & PRICING

23SZ044A01

ACCESSORIES PRICING

CAA23SC103000 (Clark)
(Cape, All Ivory)

CAB23SC103000 (Clark)
(Cape, Silver)

MISCELLANEOUS PERSONALIZATION PRICING

Extend the train for added drama (up to 12 in/30 cm), opt to shorten the train (up to 24 in/61 cm) or remove the train for a more casual look through special request

Atherton 23SC096A01

SOTTERO AND MIDGLEY®

personalize it!
FOR YOUR LOVE STORY



23SC096A01, IV



SOTTERO-MIDGLEY
THIS GOWN FEATURES
SHAPEWEAR
◆
*The inner mesh and boning
are designed to smooth your
natural curves*

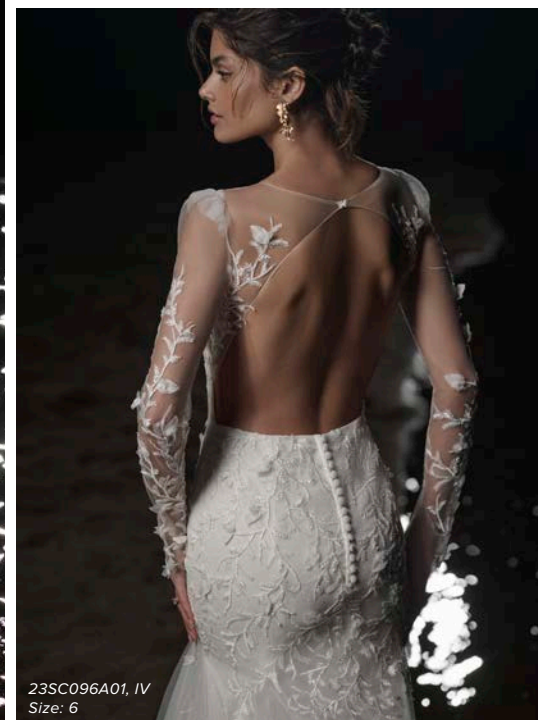
23SC096A01, IV
Size: 6



Dress: 23SC096A01, IV
Cathedral veil: VL023SC096000, IV



23SC096A01, IV



23SC096A01, IV
Size: 6



23SC096A01, IV
Size: 6



23SC096A01, IV
Size: 6



23SC096A01, IV



23SC096A01, IV

Atherton 23SC096A01

COLORS

- All Ivory gown with Ivory Illusion (pictured)
- Ivory over Soft Nude gown with Ivory Illusion

HIGHLIGHTS

- Sparkle tulle
- Bodice embellished with lace and 3-D flowers
- Plunging illusion V-neckline
- Illusion keyhole back
- Puff sleeve with lace motifs and soft flared cuff
- Lined with Shapewear for support
- Covered button over zipper closure

SIZES: 0-28

ACCESSORIES

- Cathedral length veil embellished with 3-D lace motifs sold separately
**Veil measures 120 in (305 cm)*

MISCELLANEOUS

- Extra lace motif included for minor neckline alterations

PERSONALIZATION OPTIONS & PRICING

23SC096A01
(Sparkle tulle 1)

23SC096A02
(Change sparkle tulle 1 to plain tulle)

ACCESSORIES PRICING

VL023SC096000
(Cathedral veil)

MISCELLANEOUS PERSONALIZATION PRICING

Shorten the train (up to 12 in/30 cm) or remove the train for a more casual look through special request

Bannock 23SK098A01

SOTTERO AND MIDGLEY®

personalize it!
FOR YOUR LOVE STORY





23SK098A01, IV SLV/NAT



23SK098A01, IV/IV



23SK098A01, IV SLV/NAT
Size: 6

Bannock 23SK098A01

COLORS

- Ivory gown with Ivory Illusion (pictured)
- Ivory/Silver Accent gown with Natural Illusion (pictured)

HIGHLIGHTS

- Glitter tulle
- Sheer beaded bodice lined with organza and Chantilly lace with a soft basque waistline
- Deep illusion V-neckline
- Plunging sheer beaded V-back
- Beaded spaghetti straps
- Crystal button over zipper closure
- Horsehair hem finish
- All colorways feature nude boning closure on the inner bodice

SIZES: 0-28

MISCELLANEOUS

- Photographed with light nude bra cups, dark nude available separately

PERSONALIZATION OPTIONS & PRICING

23SK098A01 <i>(Glitter tulle 3)</i>
--

23SK098A02 <i>(Change glitter tulle 3 to plain tulle)</i>
--

MISCELLANEOUS PERSONALIZATION PRICING

Remove the train for a more casual look through special request

Add crystal buttons down the back for a vintage vibe
--

Bronson 23SC046A01

SOTTERO AND MIDGLEY®

personalize it!
FOR YOUR LOVE STORY





Bronson 23SC046A01

COLORS

- Ivory gown with Natural Illusion (pictured)
- Ivory over Misty Mauve gown with Natural Illusion
- Ivory over Latte gown with Natural Illusion (pictured)

HIGHLIGHTS

- Allover unembellished lace over glitter tulle
- Plunging illusion sweetheart neckline
- Zipper with inner elastic closure and covered buttons trailing to the hem

SIZES: 0-28

ACCESSORIES

- Illusion lace cap-sleeves sold separately
- Long illusion lace bell sleeve armbands sold separately

PERSONALIZATION OPTIONS & PRICING

23SC046A01 <i>(Zipper, glitter tulle 3)</i>
23SC046A02 <i>(Zipper, change glitter tulle 3 to plain tulle)</i>
23SC046B01 <i>(Lace-up, glitter tulle 3)</i>
23SC046B02 <i>(Lace-up, change glitter tulle 3 to plain tulle)</i>

ACCESSORIES PRICING

CS023SC046000 <i>(Cap-sleeves)</i>
DS023SC046000 <i>(Bell sleeves)</i>

MISCELLANEOUS PERSONALIZATION PRICING

Opt to shorten the train (up to 12 in/30 cm) or remove the train for a more casual look through special request

Camber 23ST073A01

SOTTERO AND MIDGLEY®

personalize it!
FOR YOUR LOVE STORY



23ST073A01, IV STN/NAT



Dress: 23ST073A01, IV STN/NAT
Veil (Camber Marie): VL023ST102000, IV



23ST073A01, IV STN/NAT
Size: 6



Dress: 23ST073A01, IV STN/NAT
Bodice lining: BL023ST073000, IV



23ST073A01, IV STN/NAT



23ST073A01, IV STN/NAT
Size: 6



23ST073A01, IV STN/NAT



Dress: 23ST073A01, IV STN/NAT
Veil (Camber Marie): VL023ST102, IV



23ST073A01, IV STN/NAT

Camber 23ST073A01

COLORS

- Ivory gown with Ivory Illusion
- Ivory over Stone gown with Natural Illusion (pictured)

HIGHLIGHTS

- Allover unembellished lace over sequin glitter tulle
- Sheer organza lined sweetheart bodice
- High collar neckline
- Long illusion lace fitted sleeves finished with covered buttons at the wrist
- Invisible zipper closure
- Attached pearl trim at waist
- Faux buttons along the front bodice

SIZES: 0-24

ACCESSORIES

- Detachable sweetheart bodice lining sold separately
- Fingertip length veil edged in pearl detailing sold separately (Camber Marie, VL023ST102) *Veil measures 46 in (117 cm)

MISCELLANEOUS

- Photographed with light nude bra cups, dark nude available separately

PERSONALIZATION OPTIONS & PRICING

23ST073A01
(Sequin glitter tulle)

23ST073A02
(Change sequin glitter tulle to plain tulle)

ACCESSORIES PRICING

BL023ST073000
(Bodice lining)

VL023ST102000 (Camber Marie)
(Fingertip veil)

MISCELLANEOUS PERSONALIZATION PRICING

Opt to shorten the train (up to 12 in/30 cm), or remove the train for a more casual look through special request

Camber Marie 23ST102A01

SOTTERO AND MIDGLEY®

personalize it!
FOR YOUR LOVE STORY



23ST102A01, IV BLS/NAT



23ST102A02, IV BLS/NAT



SOTTERO-MIDGLEY
THIS GOWN IS MADE WITH LUXE
JERSEY LINING
Designed for a
comfortable fit that is
ultra-lightweight

23ST102A01, IV BLS/NAT
Size: 6



23ST102A01, IV BLS/NAT



Dress: 23ST102A01, IV BLS/NAT
Fingertip veil: VL023ST102000, IV



Camber Marie 23ST102A01

COLORS

- All Ivory gown with Ivory Illusion
- Ivory over Blush gown with Natural Illusion (pictured)
- Ivory over Misty Mauve gown with Natural Illusion

HIGHLIGHTS

- Allover unembellished lace over sequin glitter tulle
- Soft scoop neckline with deep illusion plunge
- Lace spaghetti straps
- Lined with Lorena stretch jersey for comfort
- Covered button over zipper closure
- Attached pearl trim at the waist

SIZES: 0-28

ACCESSORIES

- Fingertip length veil edged in pearl detailing sold separately
*Veil measures 46 in (117 cm)

PERSONALIZATION OPTIONS & PRICING

23ST102A01 <i>(Sequin glitter tulle)</i>
23ST102A02 <i>(Change sequin glitter tulle to plain tulle)</i>

ACCESSORIES PRICING

VL023ST102000 <i>(Fingertip veil)</i>
--

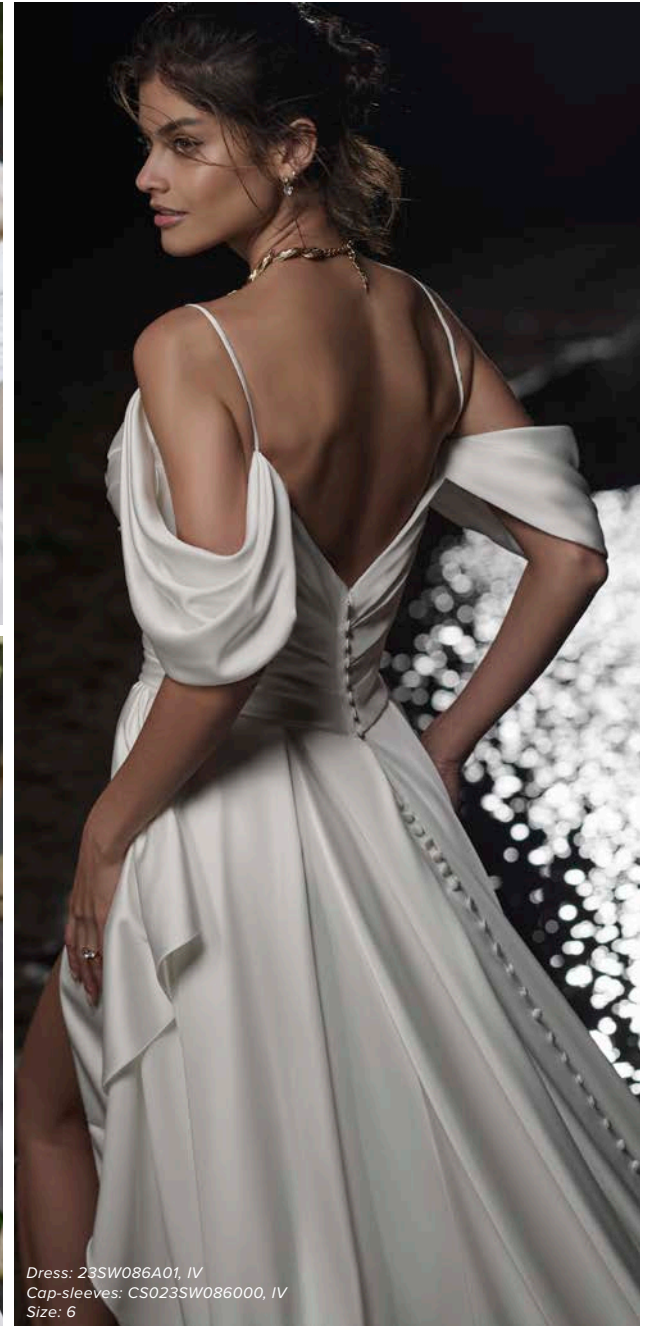
MISCELLANEOUS PERSONALIZATION PRICING

Opt to shorten the train (up to 12 in/30 cm), or remove the train for a more casual look through special request
--

Cezanne 23SW086A01

SOTTERO AND MIDGLEY®

personalize it!
FOR YOUR LOVE STORY





Dress: 23SW086A01, IV
 Cap-sleeves: CS023SW086000, IV
 Size: 6



23SW086A01, IV



Dress: 23SW086A01, IV
 Cap-sleeves: CS023SW086000, IV



Dress: 23SW086A01, IV
 Cap-sleeves: CS023SW086000, IV

Cezanne 23SW086A01

COLORS

- All Ivory (pictured)

HIGHLIGHTS

- Lustrous matte satin
- Asymmetrical ruched sweetheart neckline
- V-back
- Luminous matte satin spaghetti straps
- Lined with Sylvie crepe
- Zipper with inner elastic closure and covered buttons trailing to the hem
- Thigh high slit
- Attached wrap train for added drama

SIZES: 0-28

ACCESSORIES

- Detachable ruched off-the-shoulder cap sleeves sold separately

PERSONALIZATION OPTIONS & PRICING

23SW086A01

ACCESSORIES PRICING

CS023SW086000
 (Cap-sleeves)

Chase 23ST105A01

SOTTERO AND MIDGLEY®

personalize it!
FOR YOUR LOVE STORY





Dress: 23ST105A01, IV MV
 Beaded belt: BB023ST10500, IV
 Cap-sleeves: CS023ST105000, IV IV

Dress: 23ST105A01, IV MV
 Beaded belt: BB023ST10500, IV
 Cap-sleeves: CS023ST105000, IV IV
 Size: 6

Chase 23ST105A01

COLORS

- Ivory
- Ivory over Soft Blush
- Ivory over Misty Mauve (pictured)

HIGHLIGHTS

- Patterned glitter tulle
- Sweetheart neckline with corset bodice detailing
- Lined with Roma satin
- Zipper with inner elastic closure and covered buttons trailing to the hem
- Horsehair hem finish

SIZES: 0-28

ACCESSORIES

- Detachable beaded belt with attached bow sold separately
- Off-the-shoulder patterned glitter tulle cap-sleeves sold separately
- Cape embellished with rhinestones and beading sold separately (Clark, CAA23SC103000 in All Ivory and CAB23SC103000 in Silver)
- Opal Organza bolero with attached organza bow sold separately (Juliette, JKB23ST087000)

PERSONALIZATION OPTIONS & PRICING

23ST105A01

ACCESSORIES PRICING

BB023ST105000 <i>(Beaded belt)</i>
CS023ST105000 <i>(Cap-sleeves)</i>
CAA23SC10300 (Clark) <i>(Cape, All Ivory)</i>
CAA23SC10300 (Clark) <i>(Cape, Silver)</i>
JKB23ST087000 (Juliette) <i>(Bolero jacket)</i>

MISCELLANEOUS PERSONALIZATION PRICING

Extend the train for added drama (up to 12 in/30 cm), opt to shorten the train (up to 12 in/30 cm) or remove the train for a more casual look through special request



23ST105A01, IV MV



23ST105A01, IV MV



Dress:
23ST105A01, IV MV
 Bolero jacket (Juliette):
JKB23ST087000, IV



Dress: 23ST105A01, IV MV
 Cape (Clark): CAA23SC10300, IV

Davis Leigh 21SC431B01

SOTTERO AND MIDGLEY®

personalize it!
FOR YOUR LOVE STORY





Davis Leigh 21SC431B01

COLORS

- Ivory gown with Natural Illusion (pictured)

HIGHLIGHTS

- Aldora crepe
- Modest scoop neckline
- Modest scoop back with lined lace illusion along the neckline
- Long illusion lace sleeves
- Lined with Virtue stretch jersey for comfort
- Zipper with covered buttons trailing to the hem
- Illusion lace scalloped train
- Detachable cap-sleeve lining for modesty included

SIZES: 0-28

ACCESSORIES

- Detachable long sleeve lining for modesty sold separately

SISTER STYLES

- Available sleeveless with illusion lace side cutouts (Davis, 21SC431A01)

PERSONALIZATION OPTIONS & PRICING

21SC431B01
(Modest)

ACCESSORIES PRICING

DS021SC431000
(Sleeve lining)

Dove 23SS060A01

SOTTERO AND MIDGLEY®

personalize it!
FOR YOUR LOVE STORY





Dress: 23SS060A01, IV MV/IV
Chapel veil: VLB23SS060000, IV
Size: 18



23SS060A01, IV ND/NAT



23SS060A01, IV ND/NAT



Dress: 23SS060A01, IV ND/NAT
Chapel veil: VLB23SS060000, IV

Dove 23SS060A01

COLORS

- All Ivory gown with Ivory Illusion (pictured)
- Ivory over Misty Mauve gown with Ivory Illusion (pictured)
- Ivory over Soft Blush gown with Natural Illusion
- Ivory over Nude gown with Natural Illusion (pictured)

HIGHLIGHTS

- Sequin lace motifs over glitter tulle
- Sheer organza lined bodice
- Plunging illusion V-neckline
- Deep illusion soft V-back with beaded trim
- Beaded spaghetti straps
- Lined with Virtue stretch jersey for comfort
- Covered button over zipper closure

SIZES: 0-28

ACCESSORIES

- Fingertip length veil with sequin lace motifs sold separately
*Veil measures 46 in (117 cm)
- Chapel length veil with sequin lace motifs sold separately
*Veil measures 108 inch (274 cm)

MISCELLANEOUS

- Extra lace motif included for minor neckline alterations with plunging neckline versions only
- Photographed with light nude bra cups, dark nude available separately

PERSONALIZATION OPTIONS & PRICING

23SS060A01 (Unlined bodice, glitter tulle 3)
23SS060A02 (Unlined bodice, change glitter tulle 3 to sparkle tulle 1)
23SS060A03 (Unlined bodice, change glitter tulle 3 to Chic organza)
23SS060B01 (Lined bodice, raised neckline, wider straps, glitter tulle 3)
23SS060B02 (Lined bodice, raised neckline, wider straps, change glitter tulle 3 to sparkle tulle 1)
23SS060B03 (Lined bodice, raised neckline, wider straps, change glitter tulle 3 to Chic organza)

ACCESSORIES PRICING

VLA23SS060000 (Fingertip veil)
VLB23SS060000 (Chapel veil)

MISCELLANEOUS PERSONALIZATION PRICING

Extend the train for added drama (up to 12 in/30 cm), or remove the train for a more casual look through special request
Add covered buttons down the back for a vintage vibe

Everett 23SC077A01

SOTTERO AND MIDGLEY®

personalize it!
FOR YOUR LOVE STORY





23SC077A01, IV MCH/NAT



23SC077A01, IV MCH/NAT
Size: 6



23SC077A01, IV MCH/NAT



23SC077A01, IV MCH/NAT

Everett 23SC077A01

COLORS

- All Ivory gown with Ivory Illusion
- Ivory over Blush gown with Natural Illusion
- Ivory over Mocha gown with Natural Illusion (pictured)

HIGHLIGHTS

- Sequin lace motifs over sparkle tulle
- Illusion bodice with sequin lace motifs
- Plunging sweetheart neckline
- Illusion lace back
- Covered button over zipper closure
- Horsehair hem finish
- Tiered pick-up detailing in back train
- Corset detailing with exposed boning

SIZES: 0-28

ACCESSORIES

- Detachable off-the-shoulder lace cap-sleeves sold separately

MISCELLANEOUS

- Extra lace motif included for minor neckline alterations
- Photographed with light nude bra cups, dark nude available separately

PERSONALIZATION OPTIONS & PRICING

23SC077A01
(Sparkle tulle 1)

23SC077A02
(Change sparkle tulle 1 to plain tulle)

ACCESSORIES PRICING

CS023SC077000
(Cap-sleeves)

MISCELLANEOUS PERSONALIZATION PRICING

Shorten the train (up to 12 in/30 cm) or remove the train for a more casual look through special request

Fabienne 23SC119A01

SOTTERO AND MIDGLEY®

personalize it!
FOR YOUR LOVE STORY



23SC119A01, IV/NAT

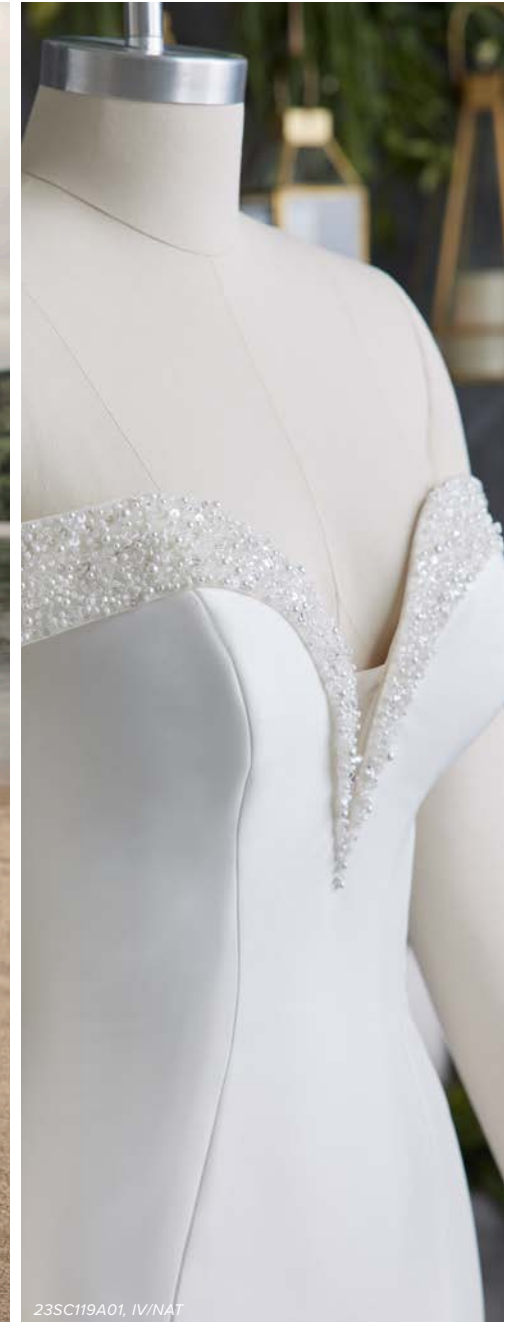


23SC119A01, IV/NAT

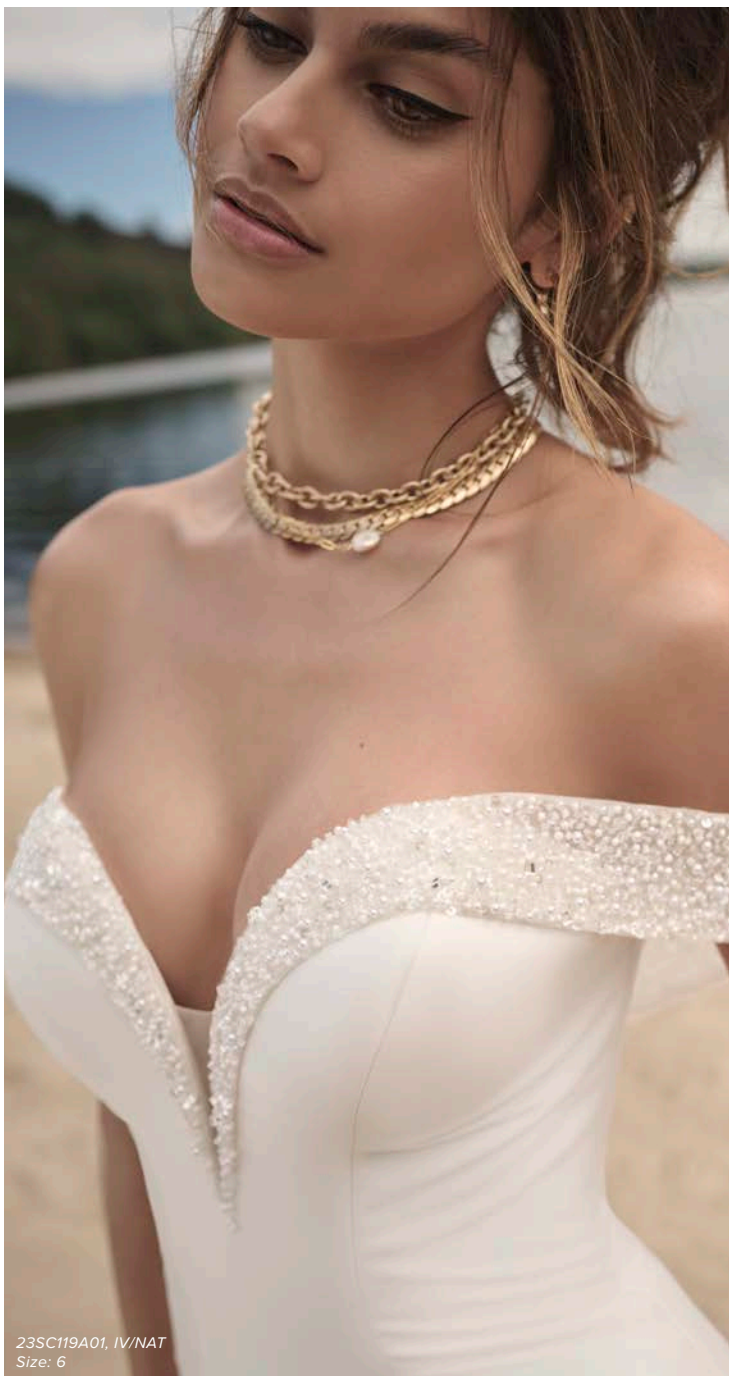


SOTTERO-MIDGLEY
THIS GOWN FEATURES
SHAPEWEAR
The inner mesh and boning
are designed to smooth your
natural curves

23SC119A01, IV/NAT
Size: 6



23SC119A01, IV/NAT



Fabienne 23SC119A01

COLORS

- Ivory gown with Natural Illusion (pictured)

HIGHLIGHTS

- Sincere stretch Mikado
- Deep illusion sweetheart neckline
- Beaded off-the-shoulder cap-sleeves
- Lined with Shapewear for support
- Zipper with inner elastic closure and covered buttons trailing to the hem

SIZES: 0-28

PERSONALIZATION OPTIONS & PRICING

23SC119A01

MISCELLANEOUS PERSONALIZATION PRICING

Remove the train for a more casual look through special request

Frost 23SC052A01

SOTTERO AND MIDGLEY®

personalize it!
FOR YOUR LOVE STORY





23SC052A01, IV MV/IV



23SC052A01, IV MV/IV
Size: 6



23SC052A02, IV MV/IV



23SC052A01, IV MV/IV

Frost 23SC052A01

COLORS

- Ivory gown with Ivory Illusion
- Ivory over Blush gown with Ivory Illusion
- Ivory over Misty Mauve gown with Ivory Illusion (pictured)

HIGHLIGHTS

- Lace motifs with sequin accents over glitter tulle
- Halter neckline accented with lace trim
- Deep V-back with illusion lace keyhole
- Lined with Virtue stretch jersey for comfort
- Covered button over zipper closure

SIZES: 0-28

PERSONALIZATION OPTIONS & PRICING

23SC052A01
(Glitter tulle 3)

23SC052A02
(Change glitter tulle 3 to plain tulle)

MISCELLANEOUS PERSONALIZATION PRICING

Extend the train for added drama (up to 12 in/30 cm), opt to shorten the train (up to 12 in/30 cm) or remove the train for a more casual look through special request

Italiana 23SW075A01

SOTTERO AND MIDGLEY®



23SW075A01, IV SLV /IV
Size: 6



23SW075A01, IV SLV /IV



23SW075A01, IV SLV /IV



23SW075A01, IV SLV /IV



Italiana 23SW075A01

COLORS

- Ivory/Silver Accent gown with Ivory illusion (pictured)

HIGHLIGHTS

- Hera organza
- Ballgown
- Sequin lace motifs over Felicity Mikado corset style bodice
- Squared strapless neckline
- Lined with Sylvie crepe
- Covered button over zipper and inner elastic closure
- Hera organza pick-ups in skirt

SIZES: 0-28

SISTER STYLES

- Available in a fitted silhouette in Felicity Mikado (23SW126A01, Italiana Lane)

PERSONALIZATION OPTIONS & PRICING

23SW075A01
(Ballgown, organza)

Italiana Lane 23SW126A01

SOTTERO AND MIDGLEY®

personalize it!
FOR YOUR LOVE STORY





23SW126A01, IV SLV/IV
Size: 6



Dress: 23SW126A01, IV SLV/IV
Detachable train: DTA23SW126000, IV SLV



23SW126B01, IV



23SW126A01, IV SLV/IV

Italiana Lane 23SW126A01

COLORS

- Ivory/Silver Accent gown with Ivory Illusion (pictured)

HIGHLIGHTS

- Felicity Mikado
- Fit and flare
- Sequin lace motifs over corset style bodice
- Squared strapless neckline
- Zipper with inner elastic closure and covered buttons trailing to the hem

SIZES: 0-28

ACCESSORIES

- Detachable train with sequin lace motifs and bubble hem finish sold separately (DTA23SW126000) *Personalization options available
- Detachable train finished with waistband closure and bubble hem finish sold separately (DTB23SW126000) *Personalization options available

SISTER STYLES

- Available as a Hera organza ballgown skirt with pick-ups (23SW075A01, Italiana)

PERSONALIZATION OPTIONS & PRICING

23SW126A01 <i>(Fit and flare, Ivory Mikado with Silver accented embellishments)</i>
--

23SW126B01 <i>(Fit and flare, All Ivory Mikado, unembellished)</i>

ACCESSORIES PRICING

DTA23SW126000 <i>(Detachable train, Ivory with Silver accented embellishments)</i>

DTB23SW126000 <i>(Detachable train, All Ivory, unembellished)</i>
--

MISCELLANEOUS PERSONALIZATION PRICING

Remove the train for a more casual look through special request

Juliette 23ST087A01

SOTTERO AND MIDGLEY®

personalize it!
FOR YOUR LOVE STORY



23ST087A01, IV



23ST087A01, IV BLS
Size: 18



Dress: 23ST087A01, IV BLS
Bolero jacket: JKB23ST087000, IV
Size: 6



Dress: 23ST087A01, IV
Bolero jacket: JKB23ST087000, IV



23ST087A01, IV



Dress: 23ST087A01, IV, BLS
 Boléro jacket: JKB23ST087000, IV
 Size: 6



Dress: 23ST087A01, IV
 Bolero jacket: JKB23ST087000, IV



23ST087A01, IV

Juliette 23ST087A01

COLORS

- All Ivory (pictured)
- Ivory over Blush (pictured)

HIGHLIGHTS

- Allover beaded lace over sequin glitter tulle
- Soft scoop neckline
- Lined with Roma satin
- Zipper with inner elastic closure and covered buttons trailing to the hem

SIZES: 0-28

ACCESSORIES

- Opal Organza bolero with attached organza bow sold separately

PERSONALIZATION OPTIONS & PRICING

23ST087A01 <i>(Sequin glitter tulle)</i>
23ST087A02 <i>(Change sequin glitter tulle to Chic organza)</i>

ACCESSORIES PRICING

JKB23ST087000 <i>(Bolero jacket)</i>

MISCELLANEOUS PERSONALIZATION PRICING

Extend the train for added drama (up to 12 in/30 cm), opt to shorten the train (up to 12 in/30 cm) or remove the train for a more casual look through special request
Add covered buttons down the back for a vintage vibe

Knox 23SC071A01

SOTTERO AND MIDGLEY®

personalize it!
FOR YOUR LOVE STORY





Dress: 23SC071A01, IV CH/IV
Cap-sleeves: CS023SC071000, IV CH/IV



Dress: 23SC071A01, IV CH/IV
Cap-sleeves: CS023SC071000, IV CH/IV
Size: 6



Dress: 23SC071A01, IV CH/IV
Cap-sleeves: CS023SC071000, IV CH/IV



Dress: 23SC071A01, IV CH/IV
Cap-sleeves: CS023SC071000, IV CH/IV



Dress: 23SC071A01, IV CH/IV
Cathedral veil: VL023SC071000, IV CH

Knox 23SC071A01

COLORS

- All Ivory gown with Ivory Illusion
- Ivory/Champagne Accent gown with Ivory Illusion (pictured)

HIGHLIGHTS

- Vaasa organza
- Bodice embellished with beaded lace and 3-D flowers
- Plunging diamond illusion sweetheart neckline
- Zipper with inner elastic closure and covered buttons trailing to the hem
- Pockets
- Detachable modesty panel for diamond illusion included
- Vaasa organza draped ruffle skirt

SIZES: 0-28

ACCESSORIES

- Detachable off-the-shoulder cap-sleeves with beaded lace motifs and 3-D flowers sold separately
- Cathedral length veil embellished with beaded lace motifs and 3-D lace motifs sold separately *Veil measures 120 in (305 cm)

SISTER STYLES

- Available without the ruffle skirt in plain Mariota organza skirt (Knox Lane, 23SC071B01)

PERSONALIZATION OPTIONS & PRICING

23SC071A01
(Ruffled skirt)

ACCESSORIES PRICING

CS023SC071000
(Cap-sleeves)

VL023SC071000
(Cathedral veil)

MISCELLANEOUS PERSONALIZATION PRICING

Remove the train for a more casual look through special request

Knox Lane 23SC071B01

SOTTERO AND MIDGLEY®

personalize it!
FOR YOUR LOVE STORY





23SC071B01, IV CH MCH/IV



23SC071C02, IV CH MCH/IV



Dress:
23SC071C02, IV CH MCH/IV
Cathedral veil (Knox):
VL023SC071000, IV CH



23SC071B01, IV CH MCH/IV
*Pictured with detachable modesty panel
Size: 6

Knox Lane 23SC071B01

COLORS

- All Ivory gown with Ivory Illusion
- Ivory/Champagne Accent gown with Ivory Illusion
- Ivory/Champagne Accent over Mocha gown with Ivory Illusion (pictured)

HIGHLIGHTS

- Mariota organza over glitter tulle
- Beaded lace and 3-D flowers over sheer organza lined bodice
- Plunging diamond illusion sweetheart neckline
- Covered button over zipper closure
- Pockets
- Corset detailing in bodice
- Detachable modesty panel for diamond illusion included

SIZES: 0-28

ACCESSORIES

- Detachable off-the-shoulder cap-sleeves with beaded lace motifs and 3-D flowers sold separately (Knox, CS023SC071000)
- Cathedral length veil embellished with beaded lace motifs and 3-D lace motifs sold separately (Knox, VL023SC071000) *Veil measures 120 in (305 cm)

MISCELLANEOUS

- Photographed with light nude bra cups, dark nude available separately

SISTER STYLES

- Available with Vaasa organza ruffle skirt (Knox, 23SC071A01)

PERSONALIZATION OPTIONS & PRICING

23SC071B01 <i>(Plain skirt, unlined bodice, glitter tulle 3)</i>
23SC071B02 <i>(Plain skirt, unlined bodice, change glitter tulle 3 to plain tulle)</i>
23SC071C01 <i>(Plain skirt, lined bodice, glitter tulle 3)</i>
23SC071C02 <i>(Plain skirt, lined bodice, change glitter tulle 3 to plain tulle)</i>

ACCESSORIES PRICING

CS023SC071000 (Knox) <i>(Cap-sleeves)</i>
VL023SC071000 (Knox) <i>(Cathedral veil)</i>

MISCELLANEOUS PERSONALIZATION PRICING

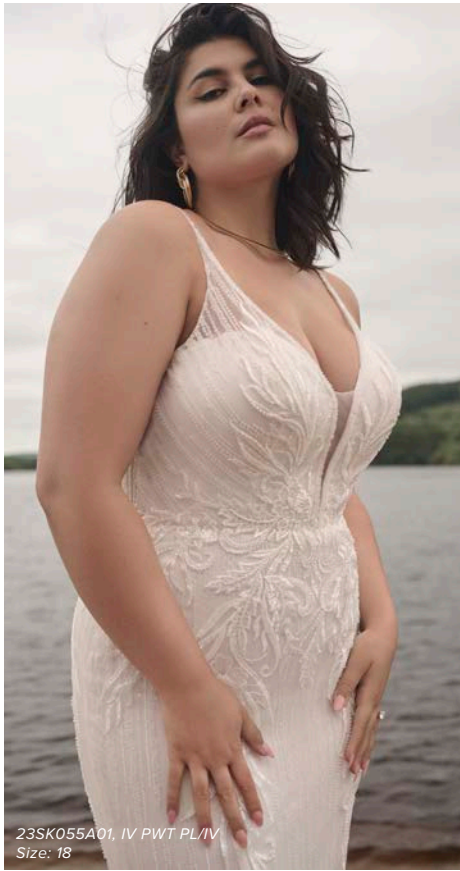
Remove the train for a more casual look through special request
Add covered buttons down the back for a vintage vibe

Luella 23SK055A01

SOTTERO AND MIDGLEY

personalize it!
FOR YOUR LOVE STORY





Luella 23SK055A01

COLORS

- All Ivory gown with Ivory Illusion (pictured)
- Ivory over Soft Blush gown with Ivory Illusion (pictured)
- Ivory/Pewter Accent over Pearl gown with Ivory Illusion (pictured)
- Ivory/Pewter Accent over Misty Mauve gown with Ivory Illusion (pictured)

HIGHLIGHTS

- Beaded embroidery over beaded tulle
- Lined front sweetheart bodice
- Plunging illusion V-neckline
- Plunging illusion scoop back
- Beaded spaghetti straps
- Lined with Virtue stretch jersey for comfort
- Covered button over zipper closure
- Extended scalloped illusion lace train

SIZES: 0-28

PERSONALIZATION OPTIONS & PRICING

23SK055A01 <i>(Beaded tulle)</i>
23SK055A02 <i>(Change beaded tulle to texture tulle 3)</i>
23SK055B01 <i>(Added coverage, beaded tulle)</i>
23SK055B02 <i>(Added coverage, change beaded tulle to texture tulle 3)</i>

MISCELLANEOUS PERSONALIZATION PRICING

Opt to shorten the train (up to 12 in/30 cm)
Add covered buttons down the back for a vintage vibe



Magdalena 23SS074A01

SOTTERO AND MIDGLEY®

personalize it!
FOR YOUR LOVE STORY





Magdalena 23SS074A01

COLORS

- All White gown with White Illusion
- Ivory gown with Natural Illusion (pictured)

HIGHLIGHTS

- Elodie Mikado
- Jewel neckline
- Deep square back
- Illusion 3/4 length sleeves with beaded lace motifs
- Zipper closure with covered buttons trailing to the hem

SIZES: 0-28

ACCESSORIES

- Double layered veil with scattered beaded lace motifs sold separately
*Veil measures 108 inch (274 cm)

PERSONALIZATION OPTIONS & PRICING

23SS074A01

ACCESSORIES PRICING

VL023SS074000
(Chapel veil)

MISCELLANEOUS PERSONALIZATION PRICING

Remove the train for a more casual look through special request

Newport 23SC127A01

SOTTERO AND MIDGLEY®

personalize it!
FOR YOUR LOVE STORY



SOTTERO-MIDGLEY
THIS GOWN IS MADE WITH LUXE
JERSEY LINING
Designed for a
comfortable fit that is
ultra-lightweight





23SC127A01, IV MCH/NAT



23SC127A01, IV MCH/NAT
Size: 6

Newport 23SC127A01

COLORS

- Ivory gown with Natural Illusion
- Ivory over Pearl gown with Natural Illusion
- Ivory over Mocha gown with Natural Illusion (pictured)

HIGHLIGHTS

- Lace motifs embellished with sequins over sparkle tulle
- Illusion lace hip dips
- Sweetheart neckline
- Plunging illusion lace V-back
- Lace trim spaghetti straps
- Lined with Wynn jersey for comfort
- Covered button over zipper closure

SIZES: 0-28

ACCESSORIES

- Detachable long fitted lace illusion sleeves sold separately

PERSONALIZATION OPTIONS & PRICING

23SC127A01 <i>(Unlined hip dips, sparkle tulle)</i>
23SC127A02 <i>(Unlined hip dips, change sparkle tulle to plain tulle)</i>
23SC127B01 <i>(Lined hip dips, sparkle tulle)</i>
23SC127B02 <i>(Lined hip dips, change sparkle tulle to plain tulle)</i>

ACCESSORIES PRICING

DS023SC127000 <i>(Fitted sleeves)</i>
--

MISCELLANEOUS PERSONALIZATION PRICING

Remove the train for a more casual look through special request

Add covered buttons down the back for a vintage vibe



23SC127A01, IV MCH/NAT



23SC127A01, IV MCH/NAT



Dress:
23SC127A01, IV MCH/NAT
Fitted sleeves:
DS023SC127000, IV/NAT



Dress:
23SC127A01, IV MCH/NAT
Fitted sleeves:
DS023SC127000, IV/NAT

Owen 23ST109A01

SOTTERO AND MIDGLEY®

personalize it!
FOR YOUR LOVE STORY





Dress: 23ST109A01, IV MV
Jacket: JK023ST109000, IV
Size: 6



Dress: 23ST109A01, IV MV
Bolero jacket (Juliette): JKB23ST087000, IV



Dress: 23ST109A01, IV MV
Detachable train: DTB23ST109000, IV MV

Owen 23ST109A01

COLORS

- Ivory
- Ivory over Pearl
- Ivory over Misty Mauve (pictured)

HIGHLIGHTS

- Allover lace with 3-D effect over sequin glitter tulle
- Scoop neckline
- Lined with Roma satin
- Zipper with inner elastic closure and covered buttons trailing to the hem

SIZES: 0-28

ACCESSORIES

- Allover lace detachable train sold separately
- Detachable train with lace motifs sold separately
- Tulle jacket with lace appliqué sold separately
- Opal Organza bolero with attached organza bow sold separately (Juliette, JKB23ST087000)

PERSONALIZATION OPTIONS & PRICING

23ST109A01

ACCESSORIES PRICING

DTA23ST109000 <i>(Detachable train, unlined, allover lace)</i>
DTB23ST109000 <i>(Detachable train, lined, scattered lace motifs)</i>
JK023ST109000 <i>(Jacket)</i>
JKB23ST087000 (Juliette) <i>(Bolero jacket)</i>

MISCELLANEOUS PERSONALIZATION PRICING

Remove the train for a more casual look through special request



Dress:
23ST109A01, IV MV
Bolero jacket (Juliette):
JKB23ST087000, IV



Dress:
23ST109A01, IV MV
Detachable train:
DTB23ST109000, IV MV



Dress: 23ST109A01, IV MV
Detachable train: DTA23ST109000, IV



Dress: 23ST109A01, IV MV
Detachable train: DTA23ST109000, IV

Polina 23SN090B01

SOTTERO AND MIDGLEY®

personalize it!
FOR YOUR LOVE STORY



23SN090B01, IV



23SN090B01, IV
Size: 6



23SN090B01, IV



23SN090B01, IV



23SN090B01, IV



23SN090B01, IV
Size: 6



23SN090B01, IV



23SN090B01, IV

Polina 23SN090B01

COLORS

- All Ivory (pictured)

HIGHLIGHTS

- Beaded 3D-lace over Chic organza
- Fully lined bodice with tulle ruching and exposed boning detail
- Strapless sweetheart neckline
- Lined with Mandala satin
- Covered button over zipper and inner elastic closure
- Detachable tulle belt included
- Extended sheer lace train

SIZES: 0-28

PERSONALIZATION OPTIONS & PRICING

23SN090B01

MISCELLANEOUS PERSONALIZATION PRICING

Extend the train for added drama (up to 24 in/61 cm), opt to shorten the train (up to 24 in/61 cm) or remove the train for a more casual look through special request

Add covered buttons down the back for a vintage vibe

Riviera 23SC062A01

SOTTERO AND MIDGLEY®

personalize it!
FOR YOUR LOVE STORY





Riviera 23SC062A01

COLORS

- Ivory gown with Natural Illusion
- Ivory over Blush gown with Natural Illusion
- Ivory over Mocha gown with Natural Illusion (pictured)

HIGHLIGHTS

- Beaded lace over sparkle tulle and textured glitter tulle
- Deep illusion V-neckline
- Plunging illusion lace V-back
- Long illusion lace sleeves finished with covered buttons at the wrist
- Covered button over zipper closure
- Horsehair hem finish

SIZES: 0-28

MISCELLANEOUS

- Extra lace motif included for minor neckline alterations

PERSONALIZATION OPTIONS & PRICING

23SC062A01
(Sparkle tulle 1 and texture tulle 3)

23SC062A02
(Change only texture tulle 3 to plain tulle, keep sparkle tulle 1)

MISCELLANEOUS PERSONALIZATION PRICING

Opt to shorten the train (up to 12 in/30 cm), or remove the train for a more casual look through special request

Add covered buttons down the back for a vintage vibe

Royce 23SS056A01

SOTTERO AND MIDGLEY®

personalize it!
FOR YOUR LOVE STORY





23SS056A01, IV SLV/IV
Size: 18

Royce 23SS056A01

COLORS

- Ivory/Silver Accent gown with Ivory Illusion (pictured)

HIGHLIGHTS

- Sparkle tulle
- Sheer organza lined bodice with bead, pearl, and sequin detail
- Deep illusion V-neckline
- Beaded spaghetti straps
- Lined with Romance satin
- Covered button over zipper closure

SIZES: 0-28

ACCESSORIES

- Photographed with cathedral length veil with scatter pearls sold separately. (Geddes, VL022MS947000) *Veil measures 120 in (305 cm)

MISCELLANEOUS

- Photographed with light nude bra cups, dark nude available separately

PERSONALIZATION OPTIONS & PRICING

23SS056A01 <i>(Unlined bodice, sparkle tulle 1)</i>
23SS056A02 <i>(Unlined bodice, change sparkle tulle 1 to plain tulle)</i>
23SS056B01 <i>(Lined bodice, sparkle tulle 1)</i>
23SS056B02 <i>(Lined bodice, change sparkle tulle 1 to plain tulle)</i>

ACCESSORIES PRICING

VL022MS947000 (Geddes) <i>(Cathedral length veil)</i>
--

MISCELLANEOUS PERSONALIZATION PRICING

Remove the train for a more casual look through special request
Add covered buttons down the back for a vintage vibe



23SS056A01, IV SLV/IV



23SS056A01, IV SLV/IV



Dress: 23SS056B02, IV SLV/IV
Cathedral veil (Geddes): VL022MS947000, IV

Senovia 23SW094A01

SOTTERO AND MIDGLEY®

personalize it!
FOR YOUR LOVE STORY





23SW094A01, DW/DW
Size: 6



23SW094A01, DW/DW



Dress: 23SW094A01, DW/DW
Fingertip veil (Desia): VL023RK088000, IV

Senovia 23SW094A01

COLORS

- All Diamond White gown with Diamond White Illusion (pictured)

HIGHLIGHTS

- Ganavi stretch Mikado
- Illusion edged deep V-neckline
- Illusion edged deep V-back
- Illusion tank straps
- Lined with Zia stretch satin
- Covered button over zipper closure

SIZES: 0-28

ACCESSORIES

- Fingertip length veil with beaded trim sold separately (Desia, VL023RK088000) *Veil measures 46 in (117 cm)
- Plain tulle cathedral length veil not offered

PERSONALIZATION OPTIONS & PRICING

23SW094A01

ACCESSORIES PRICING

VL023RK088000 (Desia)
(Fingertip length veil)

MISCELLANEOUS PERSONALIZATION PRICING

Opt to shorten the train (up to 36 in/91 cm) or remove the train for a more casual look through special request

Siva 23SC136A01

SOTTERO AND MIDGLEY®

personalize it!
FOR YOUR LOVE STORY





Dress: 23SC136A01, IV MV
Cap-sleeves: CS023SC136000, IV/IV



Dress: 23SC136A01, IV MV
Cap-sleeves: CS023SC136000, IV/IV
Size: 6



23SC136A01, IV MV

Siva 23SC136A01

COLORS

- All Ivory
- Ivory over Misty Mauve (pictured)

HIGHLIGHTS

- Allover beaded lace with sequin accent
- Sweetheart neckline
- Zipper with inner elastic closure and covered buttons trailing to the hem
- Pockets

SIZES: 0-28

ACCESSORIES

- Detachable off-the-shoulder sequin embellished lace cap-sleeves sold separately

PERSONALIZATION OPTIONS & PRICING

23SC136A01

ACCESSORIES PRICING

CS023SC136000
(Cap-sleeves)

MISCELLANEOUS PERSONALIZATION PRICING

Remove the train for a more casual look through special request

Viola 23ST104A01

SOTTERO AND MIDGLEY®

personalize it!
FOR YOUR LOVE STORY





Viola 23ST104A01

COLORS

- All Ivory gown with Ivory Illusion
- Ivory over Pearl gown with Natural Illusion
- Ivory over Misty Mauve gown with Natural Illusion
- Ivory over Blush gown with Natural Illusion (pictured)

HIGHLIGHTS

- Lace motifs accented with sequins over sparkle tulle
- Off-the-shoulder deep illusion portrait neckline
- Illusion lace back
- Off-the-shoulder long fitted sleeves with covered buttons at the wrist
- Lined with Roma satin
- Covered button over zipper closure
- Soft petal train

SIZES: 0-28

ACCESSORIES

- Detachable train with lace motifs accented with sequins over sparkle tulle sold separately *Train measures 105 inch (267 cm)
- Detachable train with lace motifs accented with sequins over tulle sold separately *Train measures 105 inch (267 cm)

MISCELLANEOUS

- Extra lace motif included for minor neckline alterations

PERSONALIZATION OPTIONS & PRICING

23ST104A01 (No beading, long sleeves, sparkle tulle 1)
23ST104A02 (No beading, long sleeves, change sparkle tulle 1 to plain tulle)
23ST104A11 (No beading, cap-sleeves, sparkle tulle 1)
23ST104A12 (No beading, cap-sleeves, change sparkle tulle 1 to plain tulle)
23ST104A21 (Beading, long sleeves, sparkle tulle 1)
23ST104A22 (Beading, long sleeves, change sparkle tulle 1 to plain tulle)
23ST104A31 (Beading, cap-sleeves, sparkle tulle 1)
23ST104A32 (Beading, cap-sleeves, change sparkle tulle 1 to plain tulle)

ACCESSORIES PRICING

DTA23ST104000 (Detachable train, sparkle tulle)
DTB23ST104000 (Detachable train, plain tulle)

MISCELLANEOUS PERSONALIZATION PRICING

Add covered buttons down the back for a vintage vibe
--

Yvonne 23SK089A01

SOTTERO AND MIDGLEY®

personalize it!
FOR YOUR LOVE STORY





Yvonne 23SK089A01

COLORS

- Ivory

HIGHLIGHTS

- Allover lace embellished with pearls and feathers over Aurora tulle
- Lyric Mikado bodice with exposed boning detail
- Strapless sweetheart neckline
- Lined with Sorella satin
- Covered button over zipper and inner elastic closure
- Detachable Lyric Mikado belt included
- Horsehair hem finish

SIZES: 0-28

ACCESSORIES

- Allover lace floor length cape embellished with pearls and feathers sold separately *Cape measures 101 in (256 cm)

PERSONALIZATION OPTIONS & PRICING

23SK089A01

ACCESSORIES PRICING

CA023SK089000
(Floor length cape)

MISCELLANEOUS PERSONALIZATION PRICING

Remove the train for a more casual look through special request

Add covered buttons down the back for a vintage vibe

Andrew 21SZ418A01

SOTTERO AND MIDGLEY®

personalize it!
FOR YOUR LOVE STORY





Andrew 21SZ418A01

COLORS

- Ivory over Nude gown with Nude Illusion (pictured)

HIGHLIGHTS

- Art deco beaded embroidery with beaded fringe
- Beaded illusion bodice
- Plunging illusion V-neckline
- Keyhole back with covered button neckline closure accented with embellished waistband
- Illusion beaded long sleeves with beaded fringe
- Lined with lightweight power mesh for comfort
- Zipper closure

SIZES: 0-18

MISCELLANEOUS

- Photographed with light nude bra cups, dark nude available separately

PERSONALIZATION OPTIONS

21SZ418A01
(Long sleeves)

NEW! 21SZ418A11 *Personalization fee applies
(Sleeveless)

Anson 22SC559A01

SOTTERO AND MIDGLEY®

personalize it!
FOR YOUR LOVE STORY





22SC559C01, IV/NAT



Dress: 22SC559A01, IV/NAT
Train: DT022SC559000, IV
Size: 6



NEW!

22SC559D01, IV/NAT



22SC559A01, IV/NAT
Size: 6

Anson 22SC559A01

COLORS

- All Ivory gown with Ivory Illusion
- Ivory gown with Natural Illusion (pictured)

HIGHLIGHTS

- Aldora crepe
- Sheer organza lined front bodice with beaded lace motifs
- Stylized deep V-neckline
- Soft illusion V-back with beaded lace motifs over Chantilly lace
- Illusion lace cap sleeves
- Lined with Virtue stretch jersey for comfort
- Covered buttons over zipper closure
- Chantilly lace accented side illusion cut outs

SIZES: 0–28

ACCESSORIES

- Detachable tulle bridal train with scalloped lace edge sold separately
- **NEW!** Detachable beaded belt sold separately (Victoriana)

MISCELLANEOUS

- Photographed with light nude bra cups, dark nude available separately

PERSONALIZATION OPTIONS

22SC559A01 <i>(Unlined bodice, cap sleeves)</i>
22SC559B01 *Personalization fee applies <i>(Lined bodice, cap sleeves)</i>
NEW! 22SC559C01 *Personalization fee applies <i>(Unlined bodice, strapless)</i>
NEW! 22SC559D01 *Personalization fee applies <i>(Lined bodice, strapless)</i>

ACCESSORIES

DT022SC559000 <i>(Detachable train)</i>
NEW! BB022MS946000 (Victoriana) <i>(Beaded belt)</i>

MISCELLANEOUS PERSONALIZATION

Add buttons down the back for a vintage vibe
--

Bailey 22SK903A01

SOTTERO AND MIDGLEY®

personalize it!
FOR YOUR LOVE STORY





Bailey 22SK903A01

COLORS

- All Ivory gown with Ivory Illusion (pictured)
- Ivory over Nude gown with Natural Illusion (pictured)

HIGHLIGHTS

- Sequin lace motifs over glitter tulle
- Lace skirt
- V-neckline accented with beaded detail
- Illusion V-back
- Beaded spaghetti straps
- Lined with Sorella satin
- Covered buttons over zipper closure
- Scallop illusion lace train

SISTER STYLES

- Available with soft tulle skirt (Bailey Lane, 22SK903B01)

SIZES: 0-28

PERSONALIZATION OPTIONS

22SK903A01 <i>(Lined bodice, V-neckline, glitter tulle)</i>
22SK903A02 <i>*Personalization fee applies</i> <i>(Lined bodice, V-neckline, change glitter tulle to sparkle tulle 1)</i>
22SK903A03 <i>*Personalization fee applies</i> <i>(Lined bodice, V-neckline, change glitter tulle to plain tulle)</i>
NEW! 22SK903C01 <i>*Personalization fee applies</i> <i>(Unlined bodice, plunging neckline, glitter tulle)</i>
NEW! 22SK903C02 <i>*Personalization fee applies</i> <i>(Unlined bodice, plunging neckline, change glitter tulle to sparkle tulle 1)</i>
NEW! 22SK903C03 <i>*Personalization fee applies</i> <i>(Unlined bodice, plunging neckline, change glitter tulle to plain tulle)</i>

MISCELLANEOUS PERSONALIZATION

Add buttons down the back for a vintage vibe
Remove the train for a more casual look through special request

Bailey Lane 22SK903B01

SOTTERO AND MIDGLEY®

personalize it!
FOR YOUR LOVE STORY





Bailey Lane 22SK903B01

COLORS

- All Ivory gown with Ivory Illusion (pictured)
- Ivory over Nude gown with Natural Illusion (pictured)

HIGHLIGHTS

- Sequin lace motifs over glitter tulle
- Soft tulle skirt
- V-neckline accented with beaded detail
- Illusion V-back
- Beaded spaghetti straps
- Lined with Sorella satin
- Covered buttons over zipper closure

SISTER STYLES

- Available with lace skirt (Bailey, 22SK903A01)

SIZES: 0-28

PERSONALIZATION OPTIONS

22SK903B01

(Lined bodice, V-neckline, glitter tulle)

22SK903B02 *Personalization fee applies

(Lined bodice, V-neckline, change glitter tulle to sparkle tulle 1)

22SK903B03 *Personalization fee applies

(Lined bodice, V-neckline, change glitter tulle to plain tulle)

NEW! 22SK903D01 *Personalization fee applies

(Unlined bodice, plunging neckline, glitter tulle)

NEW! 22SK903D02 *Personalization fee applies

(Unlined bodice, plunging neckline, change glitter tulle to sparkle tulle 1)

NEW! 22SK903D03 *Personalization fee applies

(Unlined bodice, plunging neckline, change glitter tulle to plain tulle)

MISCELLANEOUS PERSONALIZATION

Add buttons down the back for a vintage vibe

Remove the train for a more casual look through special request

Boston 22SK985A01

SOTTERO AND MIDGLEY®

personalize it!
FOR YOUR LOVE STORY





Boston 22SK985A01

COLORS

- Ivory gown with Ivory Illusion
- Ivory over Soft Pearl gown with Ivory Illusion (pictured)
- Ivory over Champagne gown with Natural Illusion (pictured)

HIGHLIGHTS

- Linear beading over tulle
- V-neckline
- Deep V-back
- Beaded spaghetti straps
- Zipper closure
- Illusion tulle side insets

SIZES: 0–28

PERSONALIZATION OPTIONS

22SK985A01 <i>(V-neckline)</i>
NEW! 22SK985B01 *Personalization fee applies <i>(Plunging neckline)</i>

Elton Lane 22SK997B01

SOTTERO AND MIDGLEY®

personalize it!
FOR YOUR LOVE STORY



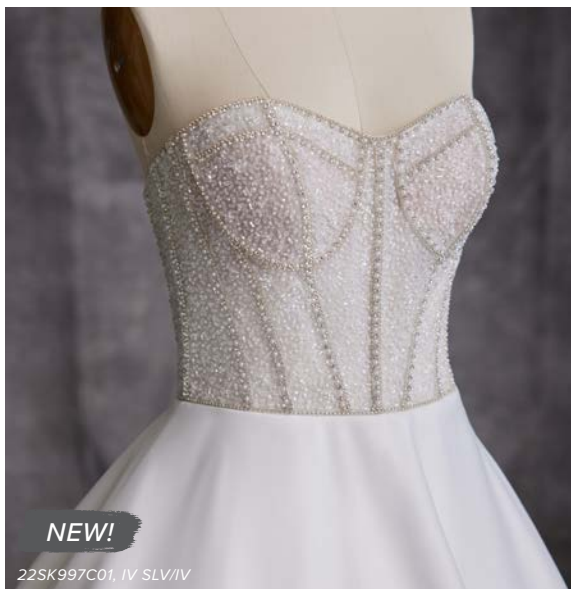


NEW!

22SK997C01, IV SLV/IV



22SK997B01, IV SLV/IV
Size: 12



NEW!

22SK997C01, IV SLV/IV

Elton Lane 22SK997B01

COLORS

- Ivory/Silver accent gown with Ivory Illusion (pictured)

HIGHLIGHTS

- Miraloma satin
- Pleated ballgown skirt
- Beaded illusion bodice with corset detailing
- Soft scoop neckline
- Zipper with inner elastic closure with covered buttons trailing down the train
- Pockets

MISCELLANEOUS

- Photographed with dark nude bra cups, available separately

SISTER STYLES

- Available with a glitter tulle skirt (Elton, 22SK997A01)

SIZES: 0-28

PERSONALIZATION OPTIONS

22SK997B01 <i>(Skirt pleats)</i>
NEW! 22SK997C01 *Personalization fee applies <i>(No skirt pleats)</i>

MISCELLANEOUS PERSONALIZATION

Remove the train for a more casual look through special request

JOSS 21SC376A01

SOTTERO AND MIDGLEY®

personalize it!
FOR YOUR LOVE STORY





21SC376A01, IV MV/ND
Size: 6



21SC376A01, IV MV/ND
Size: 6

JOSS 21SC376A01

COLORS

- All Ivory gown with Ivory Illusion
- Ivory over Blush gown with Nude Illusion
- Ivory over Misty Mauve gown with Nude Illusion (pictured)

HIGHLIGHTS

- Lace motifs over tulle and Chantilly lace
- Sheer lace bodice lined with organza
- Deep V-neckline
- Illusion lace V-back
- Illusion lace cap sleeves
- Covered buttons over zipper closure
- Horsehair hem finish

MISCELLANEOUS

- Photographed with light nude bra cups, dark nude available separately

SIZES: 0-28

PERSONALIZATION OPTIONS

21SC376A01 (Cap sleeves, Chantilly lace)
21SC376A02 *Personalization fee applies (Cap sleeves, change Chantilly lace to Chantilly lace 1 with sequin)
21SC376A03 *Personalization fee applies (Cap sleeves, add glitter tulle 2 under Chantilly lace)
NEW! 21SC376A11 *Personalization fee applies (Long sleeves, Chantilly lace)
NEW! 21SC376A12 *Personalization fee applies (Long sleeves, change Chantilly lace to Chantilly lace 1 with sequin)
NEW! 21SC376A13 *Personalization fee applies (Long sleeves, add glitter tulle 2 under Chantilly lace)

NEW!

Thomas Marie 23SZ043A01

SOTTERO AND MIDGLEY®

personalize it!
FOR YOUR LOVE STORY





23SZ043A01, IV



23SZ043A01, IV
Size: 6



23SZ043A01, IV
Size: 6

Thomas Marie 23SZ043A01

COLORS

- All Ivory (pictured)
- Ivory over Champagne
- Ivory over Soft Blush

HIGHLIGHTS

- Floral novelty organza embellished with caviar beading over glitter tulle
- Fit and flare silhouette
- Sweetheart neckline
- Off-the-shoulder sleeves
- Covered buttons over zipper closure

SISTER STYLES

- Available as a ballgown silhouette with pockets (Thomas, 21SZ372A01)

SIZES: 0-28

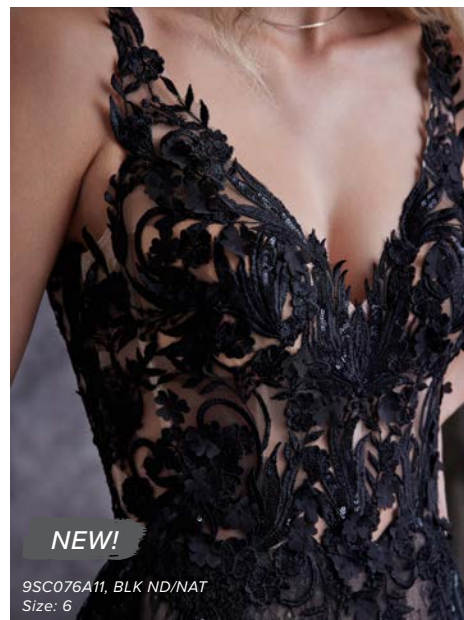
PERSONALIZATION OPTIONS

23SZ043A01
(Fit and flare)

Zander 9SC076

SOTTERO AND MIDGLEY®

personalize it!
FOR YOUR LOVE STORY





9SC076, BLK ND/NAT
Size: 6



9SC076, IV CH/CH ACCNT/NAT
Size: 6

Zander 9SC076

COLORS

- Ivory/Champagne Accent gown with Natural Illusion
- Ivory over Champagne/Champagne Accent gown with Natural Illusion (pictured)
- Black over Nude gown with Natural Illusion (pictured)
- All Black gown with Black Illusion

HIGHLIGHTS

- Contrasting layers of tulle, lace motifs, and Chantilly lace
- Ballgown silhouette
- Sheer lace bodice accented in 3D floral lace motifs
- Plunging V-neckline
- Illusion long sleeves
- Covered buttons over zipper closure

ACCESSORIES

- Tulle veil accented with lace sold separately
- **NEW!** Detachable long fitted lace sleeves sold separately

MISCELLANEOUS

- Includes detachable modesty panel option for a more demure neckline
- Photographed with light nude bra cups, dark nude available separately

SISTER STYLES

- Available as fit and flare silhouette with tank straps (Zander Lane, 23SC140A01)

SIZES: 0–28

PERSONALIZATION OPTIONS

9SC076 (Ballgown, long sleeves, Chantilly lace)
NEW! 9SC076A02 *Personalization fee applies (Ballgown, long sleeves, change Chantilly lace to texture tulle 3)
NEW! 9SC076A11 *Personalization fee applies (Ballgown, sleeveless, Chantilly lace)
NEW! 9SC076A12 *Personalization fee applies (Ballgown, sleeveless, change Chantilly lace to texture tulle 3)

ACCESSORIES

VL9SC076 (Full-length veil)
NEW! DS023SC140000 (Long fitted lace sleeves)

NEW!

Zander Lane 23SC140A01

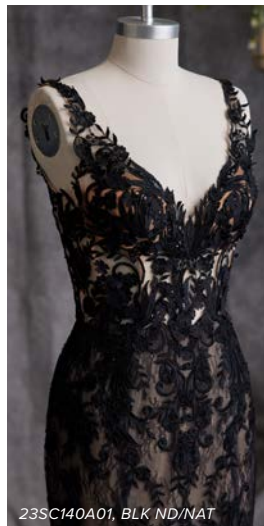
SOTTERO AND MIDGLEY®

personalize it!
FOR YOUR LOVE STORY

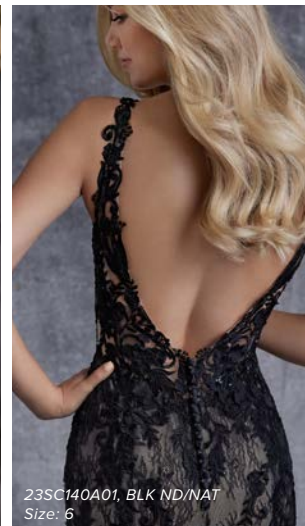




Dress: 23SC140A01, BLK ND/NAT
Long sleeves (Zander): DS023SC140000, BLK ND/NAT
Size: 6



23SC140A01, BLK ND/NAT



23SC140A01, BLK ND/NAT
Size: 6

Zander Lane 23SC140A01

COLORS

- Ivory/Champagne Accent gown with Natural Illusion
- Ivory/Champagne Accent over Nude gown with Natural Illusion
- Black over Nude gown with Natural Illusion (pictured)

HIGHLIGHTS

- Contrasting layers of tulle, lace motifs, and Chantilly lace
- Fit and flare silhouette
- Sheer lace bodice accented in 3D floral lace motifs
- Plunging V-neckline
- Deep illusion V-back
- Illusion lace tank straps
- Lined with Shapewear for support
- Covered buttons over zipper closure

SIZES: 0-28

ACCESSORIES

- Tulle veil accented with lace sold separately (Zander)
- **NEW!** Detachable long fitted lace sleeves sold separately (Zander)

MISCELLANEOUS

- Includes detachable modesty panel option for a more demure neckline
- Photographed with light nude bra cups, dark nude available separately

SISTER STYLES

- Available as a ballgown silhouette with long sleeves (Zander, 9SC076)

PERSONALIZATION OPTIONS

23SC140A01 <i>(Fit and flare, sleeveless, Chantilly lace)</i>
23SC140A02 *Personalization fee applies <i>(Fit and flare, sleeveless, change Chantilly lace to texture tulle 3)</i>

ACCESSORIES

VL9SC076 (Zander) <i>(Full-length veil)</i>
NEW! DS023SC140000 (Zander) <i>(Long fitted lace sleeves)</i>

MISCELLANEOUS PERSONALIZATION

Extend the train for added drama (up to 12 in/30 cm), opt to shorten the train (up to 12 in/30 cm) or remove the train for a more casual look through special request
Add buttons down the back for a vintage vibe

23SC140A02, BLK ND/NAT
Size: 6

quick ship

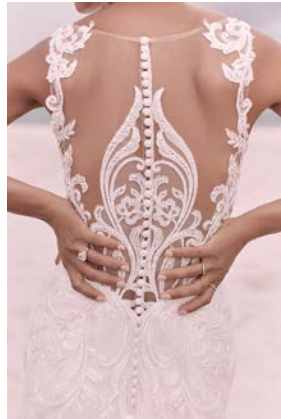
SOTTERO AND MIDGLEY



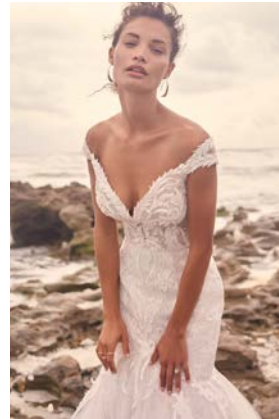
Gowns available in 10 weeks or less! For your convenience, Quick Ship stickers are available to place on your samples to identify gowns available in the Quick Ship program! Ask your Sales Representative for more details!



Bracken*
20SS655A01



Hamilton*
21SS355A01



Joss*
21SC376A01



Laramie
21SS766A01



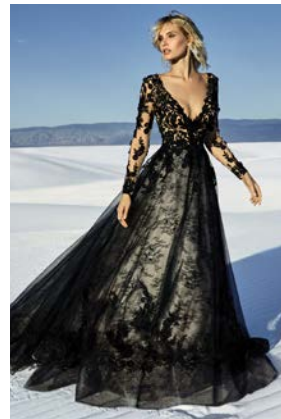
Ryker*
22SS529A01



Shasta
22SC572A01



Valona*
21SS786A01



Zander*
9SC076

*Ideal for CURVY brides

Note: Personalizations and Special lengths do not apply. Effective July 1, 2022. Extended deliveries may apply during Chinese holidays.